

LVH



TOWNHOUSE ANTOINETTE

BELGRAVIA, LONDON, UNITED KINGDOM

5
BEDROOMS

10
GUESTS

4 + 2 HALF
BATHROOMS

3,670
SF



TOWNHOUSE ANTOINETTE

BELGRAVIA, LONDON

Townhouse Antoinette is a stunning contemporary estate perched in one of London's most prestigious neighborhoods. Within arm's reach of Eaton and Chester square, this residence is lauded as the Pearl of Belgravia, boasting exclusive access to the serene Belgrave Square Gardens Park.

Timeless old-world elegance meets ultra-chic panache, with bijou spaces outfitted with striking contemporary furnishings. A glamorous seating featuring gold-gilded art deco accents dazzles against a rich lustrous precious stone black table. Early 20th-century console tables match the romanticism of evocative line drawings, displaying scintillating trinkets imbued with old-world prestige. The focal L-shaped living room presents the pinnacle of haute couture refinement, with plush velour sculptural seating accompanying jewel sculpted accent tables. Sensual hues of peach, beige, grey, and gold douse the space in a gloriously serene high fashion ambiance. A dining and breakfast room accommodates formal and casual dining affairs, with two fully equipped kitchens providing the benchmark for gastronomic exploration. Five sumptuous bedrooms present the pinnacle of luxury, comfort, and discretion for ten discerning guests. Three suites are equipped with ensuite bathrooms, while each is lavishly appointed with exceptional detailing from tufted headboards, floor-length drapes, and artful light fixtures.

A masterclass in aesthetic perfection, Townhouse Antoinette is a glamorous trophy home conceived for entertaining. Perfected in the art of fine living, guests may revel in the private steam room or indulge in the trendy outdoor space outfitted with a fireplace and sumptuous furniture. An astounding urban vacation rental belonging to the most exclusive tier of London property, Antionette is sure to dazzle the most seasoned luxury traveler.

INTERIOR

- Air Conditioning
- Cable, Satellite or Smart TV
- Dining Room
- Fireplace
- Laundry
- Home Office
- Smart Home
- Wine Storage

EXTERIOR

- Sun Loungers
- Outdoor Fireplace
- Patio
- Terrace

LOCATION

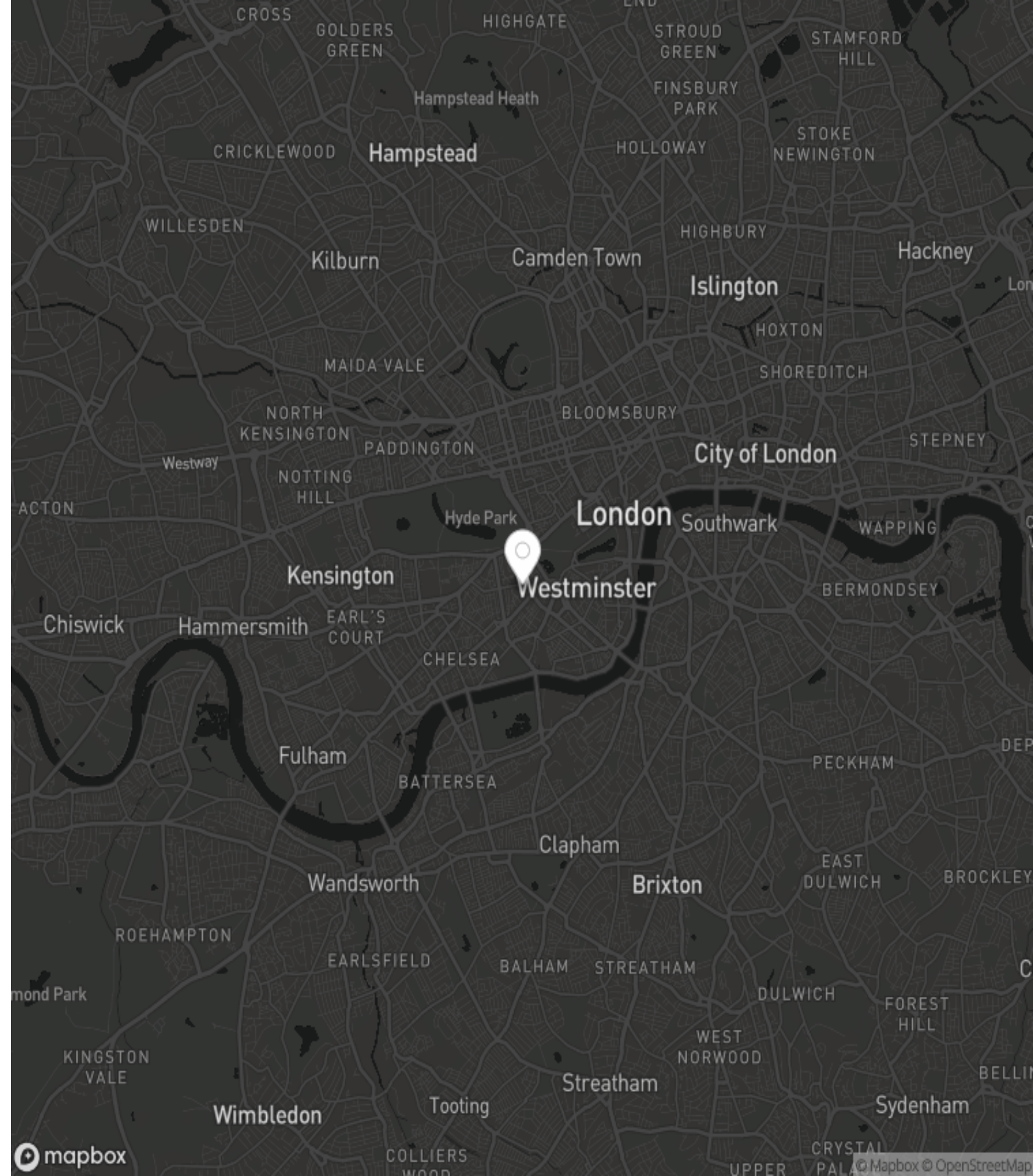
- City View

LVH

LONDON

BELGRAVIA

London's enduring allure lies in its seamless blend of heritage and modernity. From Tower Bridge to Covent Garden, the city reveals layers of history alongside cutting-edge culture. World-class institutions like the National Gallery, Shakespeare's Globe Theatre and the Houses of Parliament stand as icons of a city that never ceases to evolve, offering visitors a rich cultural experience near their accommodation.



INCLUDED SERVICES

Every detail of your stay has been meticulously considered; each luxury home has a dedicated on-site team, including a steward, housekeeping staff, and field manager.



Field Managers



Stewards



Concierge
Access



Housekeeping



Pre-stocking



Welcome
Ceremony



Unpacking

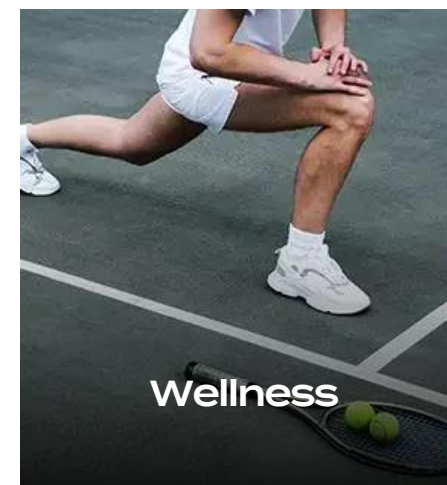
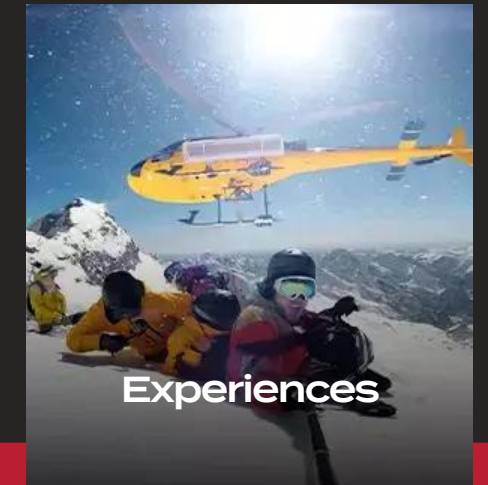


Luxury Spa
Products



ADDITIONAL SERVICES

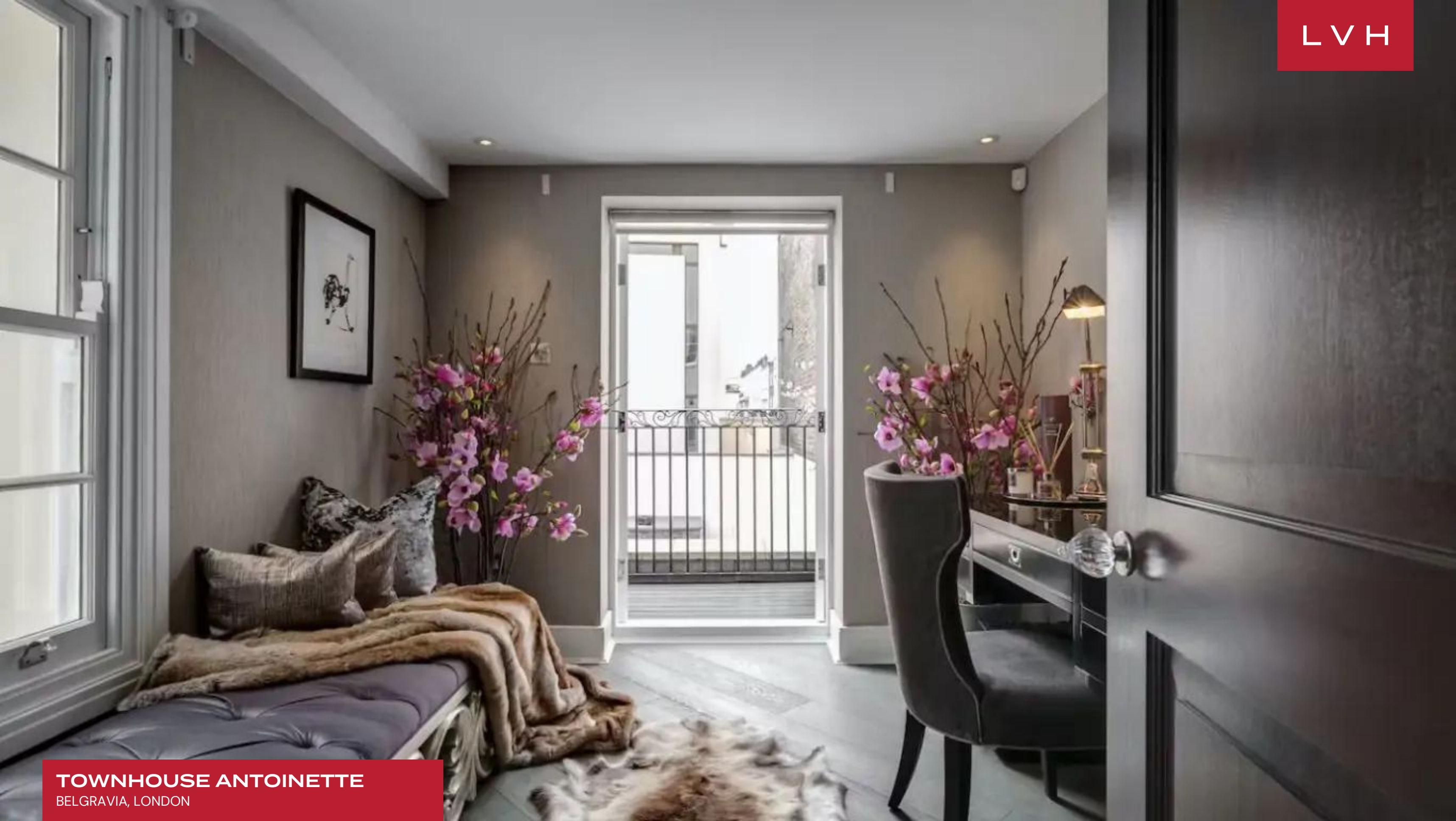
To further elevate your stay, we offer additional services that include an on-site chef, pre-arranged chartered flights and yachts, access to exclusive establishments and events, and tailored experience packages.













TOWNHOUSE ANTOINETTE
BELGRAVIA, LONDON

WHO WE ARE

LVH is the preeminent super home chartering company offering ultra-luxury homes in hundreds of global destinations. Each home in our collection is carefully curated to deliver the highest standard of quality and comes complete with a full-time steward, housekeeping & concierge access. Our team will orchestrate the entire experience including in-home services, daily activities and travel logistics. LVH Domus, our invite-only membership, brings the same level of service to every day of your life. Endless possibilities await the most discerning families.





CURATORS OF
IMMEASURABLE
MOMENTS





LVH GLOBAL HEADQUARTERS
505 Fifth Avenue, 15th Floor
New York, NY 10017, USA

LVHGLOBAL.COM
1-212-244-4001
BOOKING@LVHGLOBAL.COM