

LVH



CHALET PEPPER

CORTINA, CORTINA D'AMPEZZO, ITALY

6

BEDROOMS

12

GUESTS

7 + 2 HALF

BATHROOMS

9,687

SQUARE FEET



CHALET PEPPER

CORTINA, CORTINA D'AMPEZZO

Chalet Pepper is a glorious luxury residence belonging to Cortina's famed Via Menardi area. La Dolce Vita indulgence meets traditional ski-lodge charm in this magnificent estate embodying Italian Alpine luxury. A mere two hours from Venice airport, guests will be astounded by the boot's natural majesty and biodiversity. This chalet promises total discretion at a moment's notice from the heart of the town center, replete with fairytale charm and fantastic gastronomic traditions.

Aesthetically immaculate interiors present a masterclass in contemporary ski luxury. Glossy and scintillating common rooms toe the line between snowed-in romanticism and high fashion glamor. Opulently lacquered timber comes to its fullest expression in the sleek and elegant living room, abounding with modern precision and crisp dimension. Scintillating silver velour upholstery shrouds the designer furnishings, imparting dollops of glitz and glam to the timeless elegance of burgundy varnished elements. Vintage car paintings evoke the region's proud automaking history in an elegant living room complete with a sleek fireplace. A cocktail bar runs adjacent to the ultra-chic media room, delineating a fantastic spot for spontaneous get-togethers, apres ski, or post-dinner aperitifs. Sleek tray ceilings are supplanted with electrifying LED mood lighting in the formal dining room, curating an exceptional nocturnal ambiance ideal for epicurean exploration and gastronomic indulgence. Six fantastic bedrooms are arranged across four floors of elite living space, navigable by stairs or elevator. Top-notch amenities include a wine cellar, a sound-proofed cinema room, and a game room. The master bedroom is a particular highlight, with a king-size bed, two walk-in wardrobes, a fireplace, and an en-suite bathroom with a Jacuzzi bathtub. In-home zen-inspired spa facilities include a heated indoor pool with a waterfall, a sauna, a Jacuzzi, a hammam, a massage room, and a gym.

Terrace spaces are easily accessible, offering no shortage of vantage points to soak in the glory of the majestic Dolomites. A behemoth of Italian Alpine luxury, Chalet Pepper's alfresco and dining spaces are sure to dazzle the most discerning luxury adventurer.

INTERIOR

- Bar
- Cable, Satellite or Smart TV
- Home Theater
- Dining Area
- Fireplace
- Gym
- Hammam
- Laundry

EXTERIOR

- Garage
- Garden
- Al Fresco Dining
- Terrace

LOCATION

- Mountain View
- Walking Distance to Lift

LVH

INTERIOR

- Massage Room
- Indoor Pool
- Private Elevator
- Sauna
- Ski Room
- Sound System
- Spa Lounge
- Staff Quarters
- Walk-In Closet
- Wine Cellar

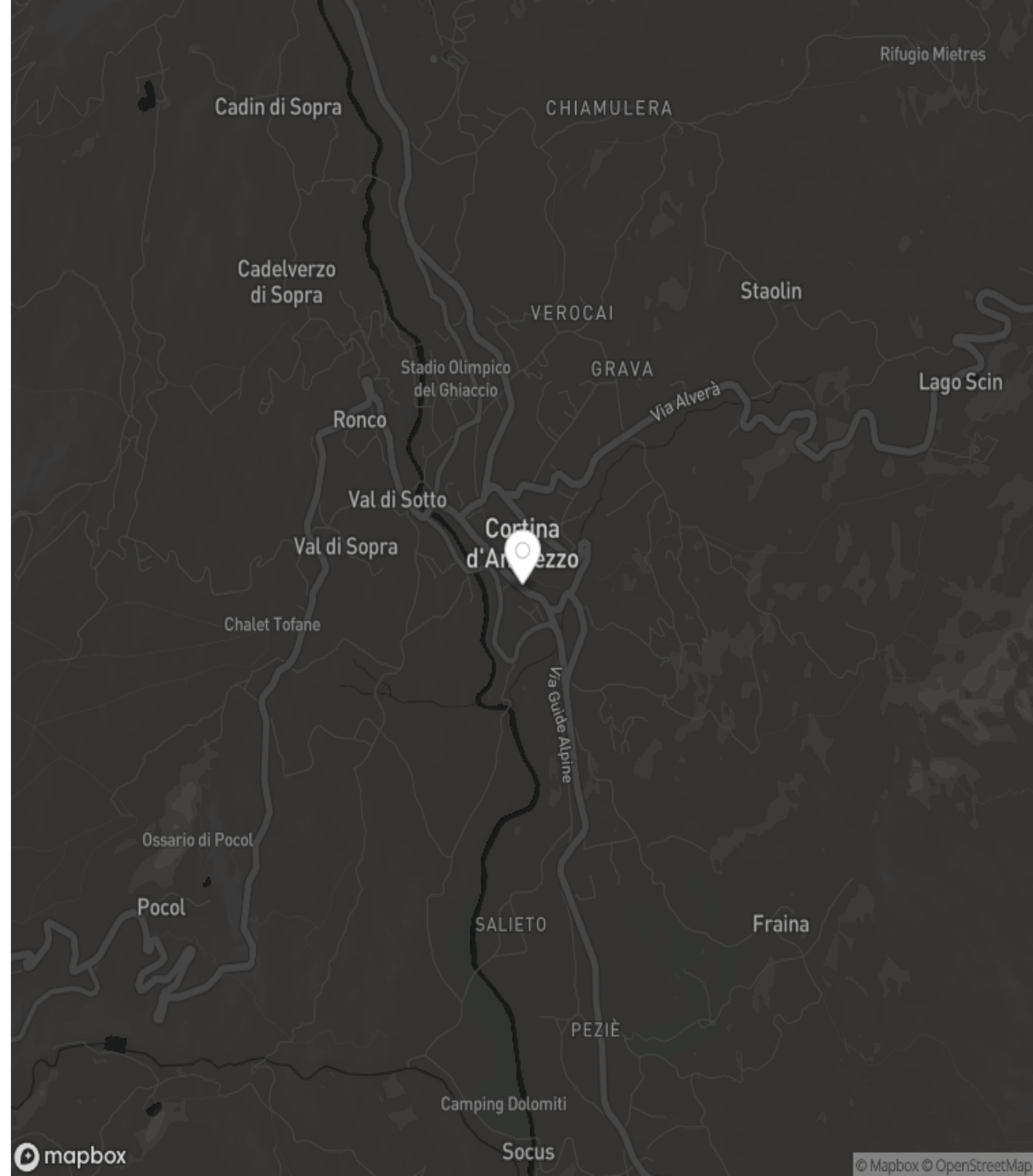


LVH

CORTINA D'AMPEZZO

CORTINA

Cortina d'Ampezzo, otherwise known as the "Queen of the Dolomites," is the purest expression of Italian alpine beauty. Sheer cliff faces and jagged peaks offer up a spectacular backdrop to a charming village bursting with Italian charm and cosmopolitan comforts. Grand hotels and luxurious chalets dot the landscape, showcasing exquisite craftsmanship and a fairytale setting. The natural surroundings of Cortina d'Ampezzo are truly captivating, with majestic mountain peaks, lush valleys, and crystal-clear lakes. The Dolomites, a UNESCO World Heritage site, offers a picturesque backdrop for outdoor activities and exploration. The town itself is known for its upscale shopping boutiques, high-end restaurants, and exclusive nightlife venues. Cortina d'Ampezzo also hosts a range of seasonal attractions, including skiing and snowboarding in winter, hiking and mountain biking in summer, and cultural events throughout the year. Serene and idyllic with an illustrious aristocratic heritage, Cortina is a wondrous bastion of health tourism, winter sports, and luxury resorts. As the host of the upcoming 2026 Winter Olympics, the buzz around this gorgeous resort town builds with each passing day.







Field Managers



Stewards



Concierge Access

INCLUDED SERVICES

Every detail of your stay has been meticulously considered; each luxury home has a dedicated on-site team, including a steward, housekeeping staff, and field manager.



Housekeeping



Pre-stocking



Welcome Ceremony



Unpacking



Luxury Spa Products



Yachts



Private Jets



Super Cars



Chefs

ADDITIONAL SERVICES

To further elevate your stay, we offer additional services that include an on-site chef, pre-arranged chartered flights and yachts, access to exclusive establishments and events, and tailored experience packages.



Staffing



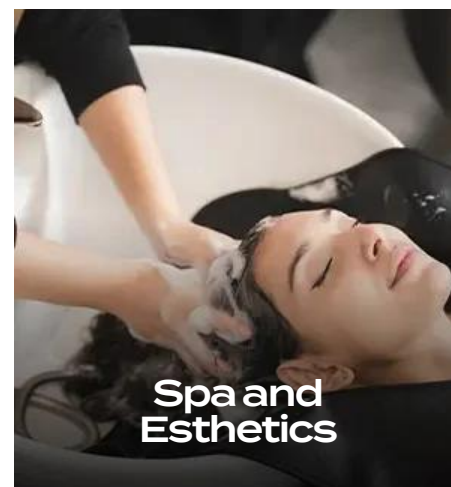
Helicopters



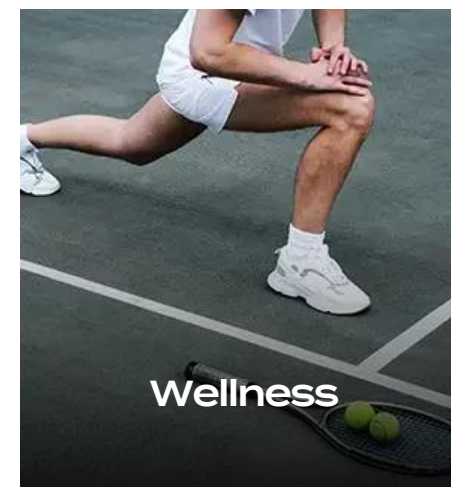
Entertainment



Experiences



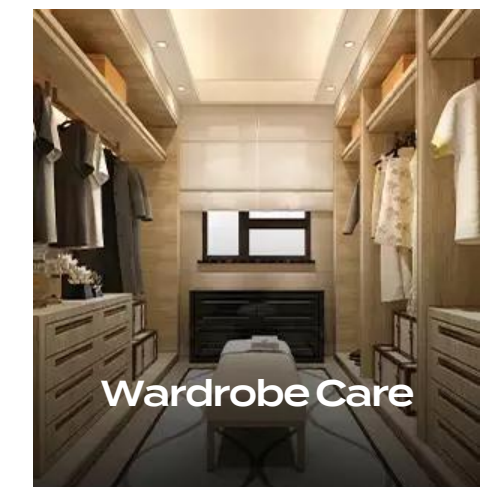
Spa and Esthetics



Wellness



Chauffeurs



Wardrobe Care















































WHO WE ARE

LVH is the prominent luxury super home chartering company that provides access to thousands of elite homes in hundreds of global destinations. Our team will orchestrate the entire experience including exceptional on-site staff, in-home services, out of home activities and travel logistics. Endless possibilities await the most discerning guests. LVH Domus, our invite-only membership, brings the same level of service to every day of your life.





**CURATORS OF
IMMEASURABLE
MOMENTS**



GLOBAL HQ
505 Fifth Avenue, 15th Floor
New York, NY 10017, USA

LVHGLOBAL.COM
1-212-244-4001
BOOKING@LVHGLOBAL.COM