

LVH



VILLA ELIZABETH

LITCHFIELD, CONNECTICUT, CONNECTICUT

10
BEDROOMS

20
GUESTS

13 + 1 HALF
BATHROOMS

25,000
SQUARE FEET



VILLA ELIZABETH

LITCHFIELD, CONNECTICUT

Villa Elizabeth is a gorgeous manor doused in the prestige of a 19th-century French Chateau. Stately and regal, this estate sits on a vast 450 acres of terrain overlooking the Connecticut foothills. This stunning Litchfield property is updated to provide the highest caliber modern comforts and amenities.

Pristine beige and white interiors line the home's glorious interiors garnished with traditional wainscotting, raised paneling, Herringbone floors, and custom crown molding. Delicate French windows inundate the refined, aristocratic interiors with gorgeous light, animating the home's prestigious decor. A sumptuous seating room is decorated with tasteful 1920s-era Parisian lithography, ultra-plush sofas, and armchairs convening around an immaculate stone fireplace and glossy grand piano. A dreamy formal living room flaunts a lush palette of custard, seafoam, and pink. Flush with crystal chandeliers, candelabras, and stunning Impressionist pieces, the aristocratic romanticism of this home is truly wondrous. With a grand 25,000 sq. ft at its disposal, this manor brims with common spaces, including a trophy room, library, and multiple dining rooms. Reveling in the refinement and grandeur of a bygone era, Villa Elizabeth offers ten glorious bedrooms, fit to accommodate up to twenty distinguished guests. The manor boasts an indoor pool overlooking mature gardens, a gym, basketball court, exercise, and steam room.

The outdoors are as serene as possible, with a vast pastoral paradise unraveling before guests. An outdoor pool, tennis, and play court ensure spontaneity and recreation for large groups. The three-car garage is located on the circular front drive next to the porte-cochere.

INTERIOR

- Air Conditioning
- Cable/Satellite TV
- Dining Room
- Fireplace
- Gym
- Library
- Office
- Piano
- Pool Indoor
- Private Elevator
- Smart Home

EXTERIOR

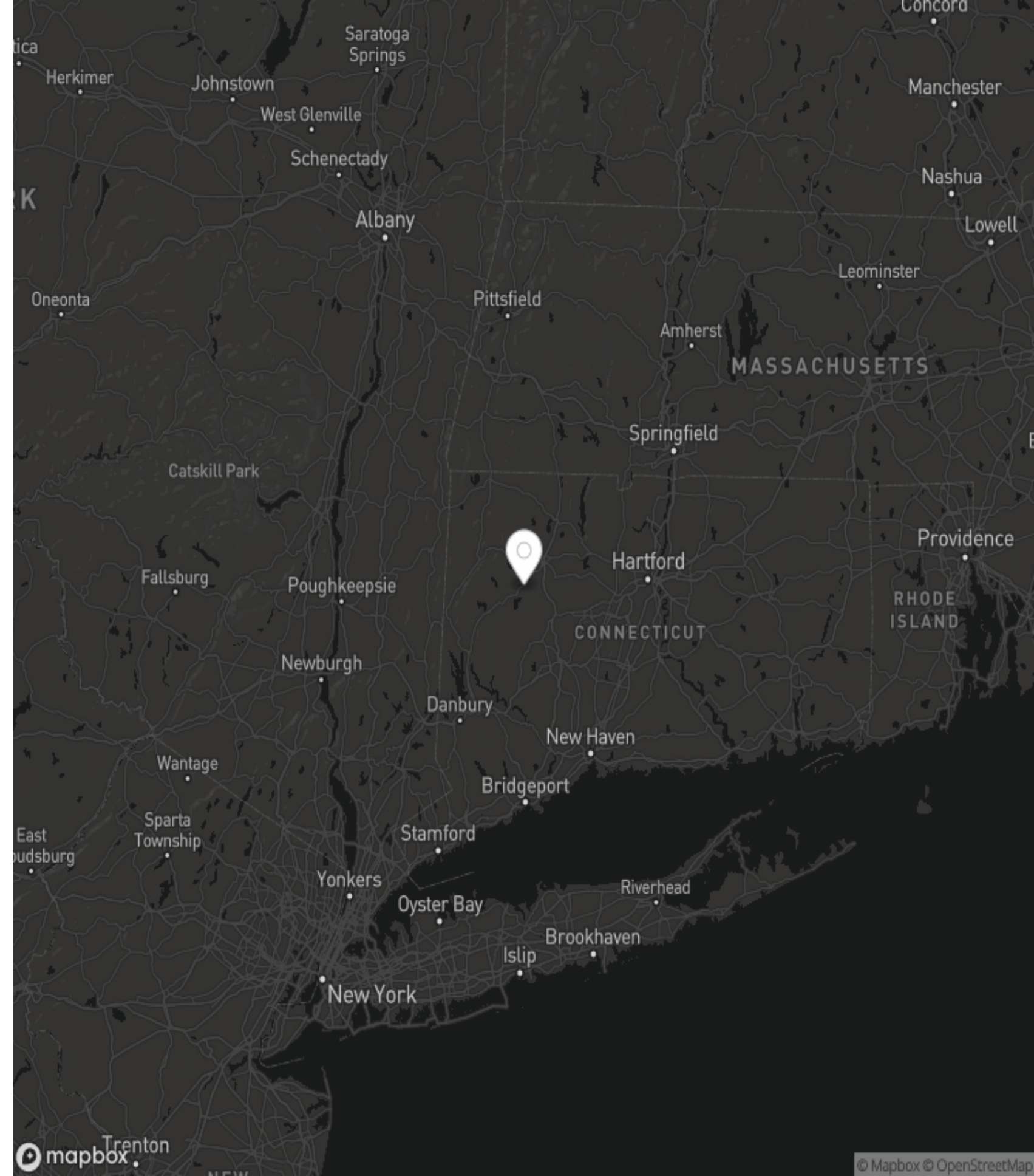
- Garage
- Gated Property
- Lounger and Chair
- Outdoor Dining
- Pool Outdoor
- Tennis Court
- Terrace



CONNECTICUT

LITCHFIELD

Connecticut, a gem of New England, offers a unique blend of luxury, charm, and history. It is a state where charming small towns, cultural richness, and scenic coastal views create an unparalleled experience for the discerning traveler. From the refined charm of Greenwich, where stately mansions whisper tales of old-world affluence, to the cultural richness of Hartford, home to the prestigious Wadsworth Atheneum Museum of Art, Connecticut captivates the intrepid explorer with a penchant for the exceptional. The state's rolling hills and serene countryside present an idyllic backdrop for exclusive retreats, while its vibrant cities teem with haute cuisine, bespoke boutiques, and exceptional entertainment, all reserved for the privileged few.







Field Managers



Stewards



Concierge Access

INCLUDED SERVICES

Every detail of your stay has been meticulously considered; each luxury home has a dedicated on-site team, including a steward, housekeeping staff, and field manager.



Housekeeping



Pre-stocking



Welcome Ceremony



Unpacking



Luxury Spa Products



Yachts



Private Jets



Super Cars



Chefs

ADDITIONAL SERVICES

To further elevate your stay, we offer additional services that include an on-site chef, pre-arranged chartered flights and yachts, access to exclusive establishments and events, and tailored experience packages.



Staffing



Helicopters



Entertainment



Experiences



Spa and Esthetics



Wellness



Chauffeurs



Wardrobe Care

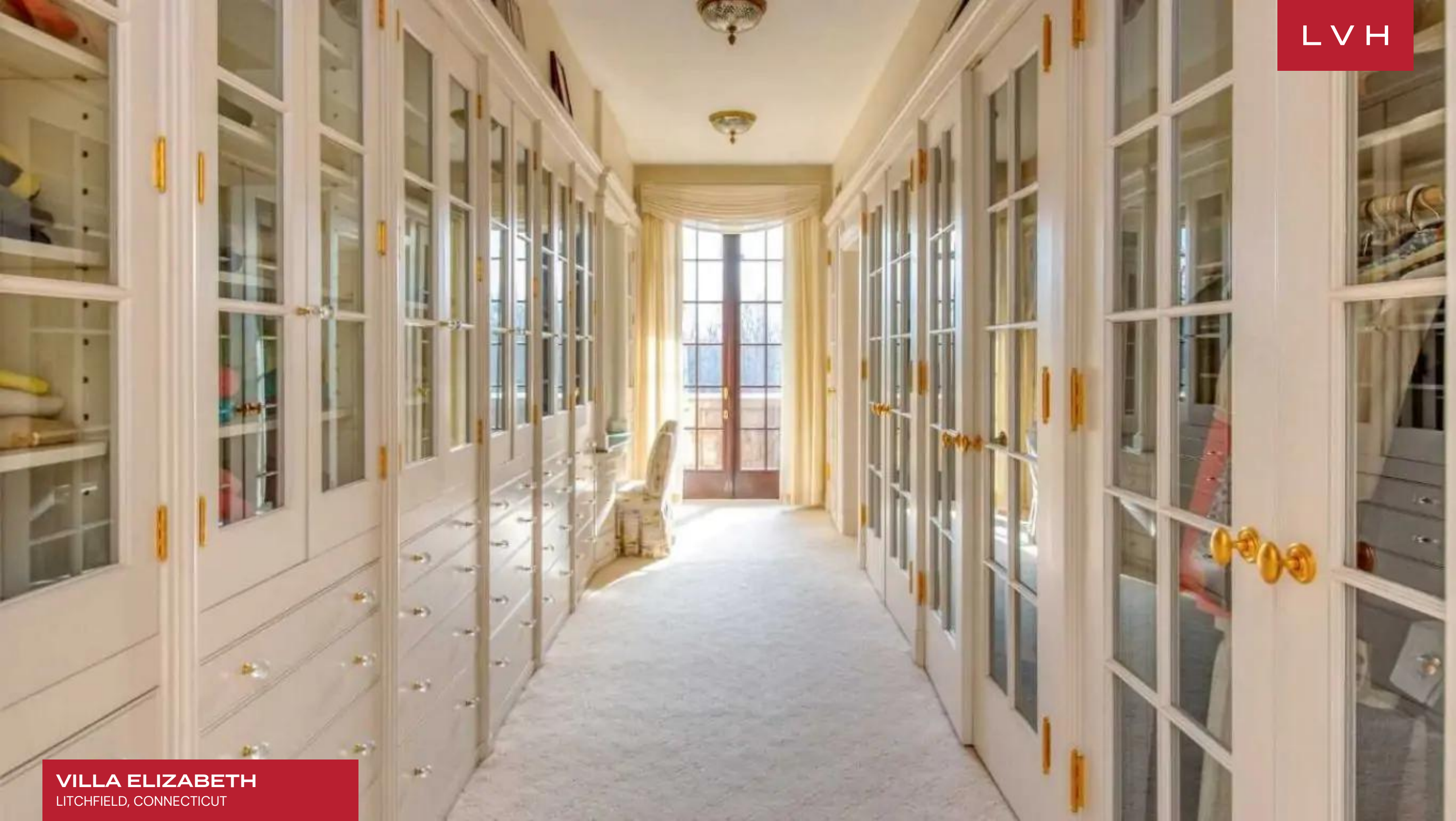


































VILLA ELIZABETH
LITCHFIELD, CONNECTICUT



VILLA ELIZABETH
LITCHFIELD, CONNECTICUT











VILLA ELIZABETH
LITCHFIELD, CONNECTICUT



LVH

WHO WE ARE

LVH is the prominent luxury super home chartering company that provides access to thousands of elite homes in hundreds of global destinations. Our team will orchestrate the entire experience including exceptional on-site staff, in-home services, out of home activities and travel logistics. Endless possibilities await the most discerning guests. LVH Domus, our invite-only membership, brings the same level of service to every day of your life.





LVH

CURATORS OF
IMMEASURABLE
MOMENTS



GLOBAL HQ
505 Fifth Avenue, 15th Floor
New York, NY 10017, USA

LVHGLOBAL.COM
1-212-244-4001
BOOKING@LVHGLOBAL.COM