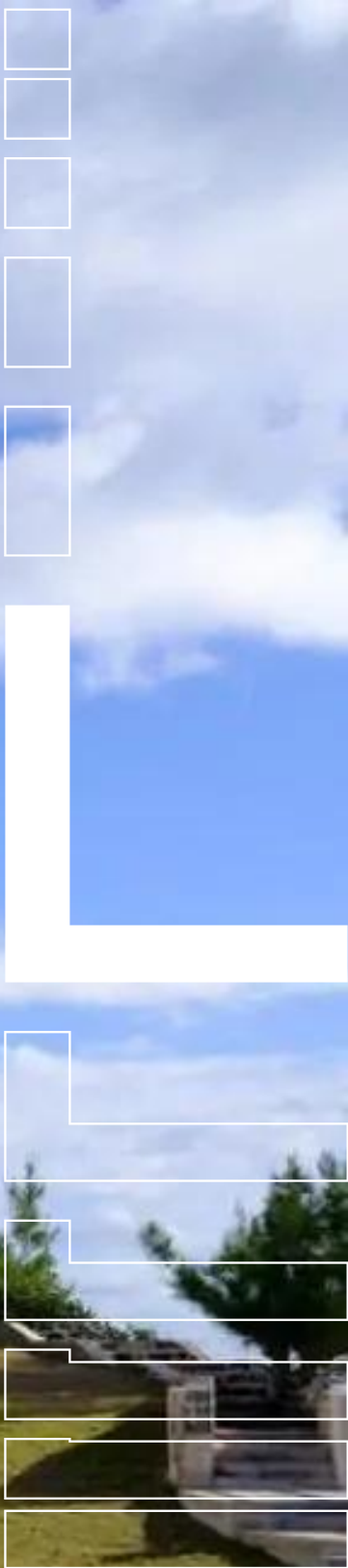


LVH



# THE LOREN RESIDENCE

SMITHS PARISH, BERMUDA, BERMUDA

**8**  
BEDROOMS

**16**  
GUESTS

**9 + 3** HALF  
BATHROOMS

**10,700**  
SQUARE FEET





**THE LOREN RESIDENCE**  
SMITHS PARISH, BERMUDA



## THE LOREN RESIDENCE

SMITHS PARISH, BERMUDA

The Loren Residence is an exquisite contemporary estate perched before Bermuda's enchanting south shore. The Villa's iconic sculptural facade graciously conforms to the property's hilly topography, claiming nearly six acres of oceanfront terrain. Few luxury beachfront estates may compare to this residence's serene coastal environs, claiming over five acres of prime oceanfront terrain.

Spectacular interiors present the ultimate merger of contemporary chic refinement and maritime romanticism. A dynamic free-flowing floorplan reimagines indoor-outdoor luxury living with oversized retractable openings and swinging glass doors. Curating an exceptional permeability and oneness with its supernatural surroundings. Pristine whitewashed walls offer the ultimate canvas for designer furnishings perfected in beach-chic sophistication. Immaculate common areas are populated with ultra-plush seating arrangements, beckoning social spontaneity or downtime with family. An uncanny floor plan and dynamic layout exhibit a diversity of gorgeous common areas, from intimate salons to open entertaining areas. An integrated rotunda and rounded facade maximize interaction with the outdoors, with endless echelons of windows dousing the estate with all-day sun. Six sumptuous ensuite bedrooms outfitted with King and Queen sized bedding accommodate guests with utmost comfort, discretion, and refinement. An adjacent cottage with a separate entrance offers two additional bedrooms, ensuring total privacy. Top-shelf amenities include a fitness room, library, gourmet kitchen, and screening room, effectively covering all the bases from recreation and gastronomy to leisure.

The Loren Residence comes to its fullest expression with its magical outdoor setting, claiming 300 feet of water frontage along the famed sands of Pink Beach. Ample deck space leaves no shortage of vantage points for soaking in the ocean views or replenishing sun rays. An indoor-outdoor poolside bar, kitchen, and BBQ grill beckons fantastic all-day and all-night entertaining opportunities. Navigate the Villas' complimentary golf cart to a breadth of world-class Island facilities ranging from spas, tennis courts, and links. Choose between the therapeutic waters of the heated swimming pool, Jacuzzi, or the refreshing North Atlantic, and discover the purest expression of beachside luxury.

### INTERIOR

- Air Conditioning
- Cable/Satellite TV
- Dining Area
- Fireplace
- Gym
- Laundry
- Office

### EXTERIOR

- BBQ
- Garage
- Golf Cart
- Jacuzzi Outdoor
- Lounger and Chair
- Outdoor Dining
- Outdoor Kitchen

### LOCATION

- Beach Front

## INTERIOR

- Private Elevator
- Sound System
- Walk-In Closets
- Wine Storage

## EXTERIOR

- Outdoor Sound System
- Patio
- Pool Bar
- Pool Outdoor Heated
- Tennis Court
- Terrace
- Terrace Rooftop



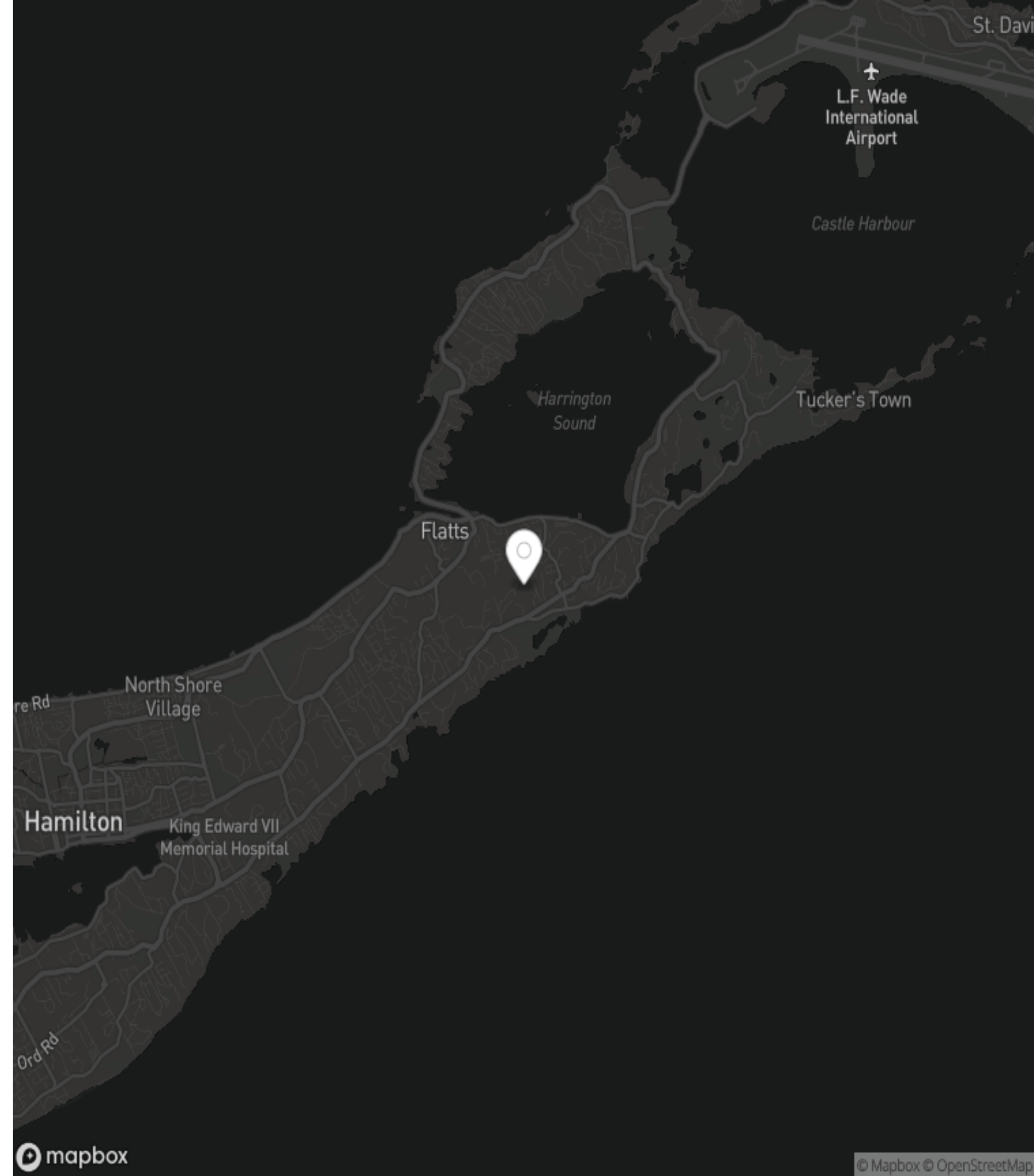




## BERMUDA

SMITHS PARISH

A lone paradise in the midst of the Atlantic, Bermuda is a paradisiacal isle dripping with colonial intrigue and tropical splendor. The crystalline turquoise waters of the Sargasso Sea lay the Island's marine wonders bare, showcasing shallow coral reefs and technicolor fish. Magical palettes shroud the Island with a hyper-real intensity with lush tropical foliage, fragrant frangipani, and electric bougainvillea dazzling against golden-hued sands. A bastion of refined taste, genteel sensibilities, and manicured country-club-like residential quarters, Bermuda has been alluring elites to its shores for nearly a century. An anomaly in all the right ways, discover the secrets of one of the world's most beautiful tropical oases.











Field Managers



Stewards



Concierge Access

## INCLUDED SERVICES

Every detail of your stay has been meticulously considered; each luxury home has a dedicated on-site team, including a steward, housekeeping staff, and field manager.



Housekeeping



Pre-stocking



Welcome Ceremony



Unpacking



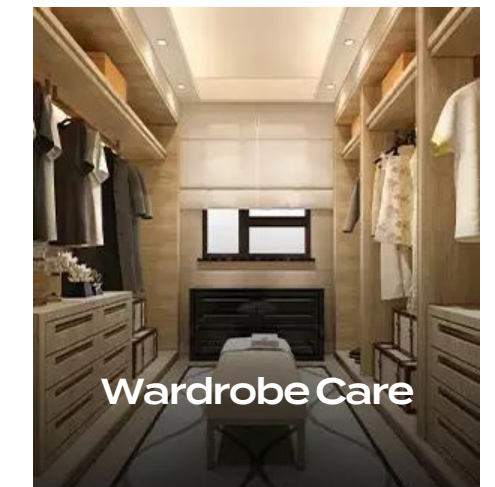
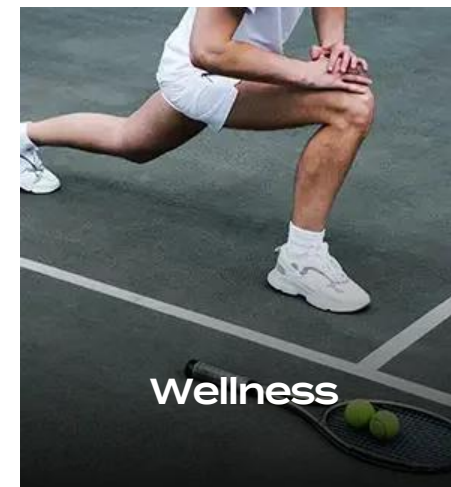
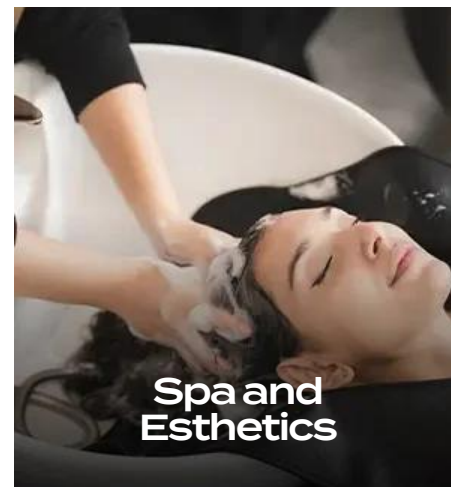
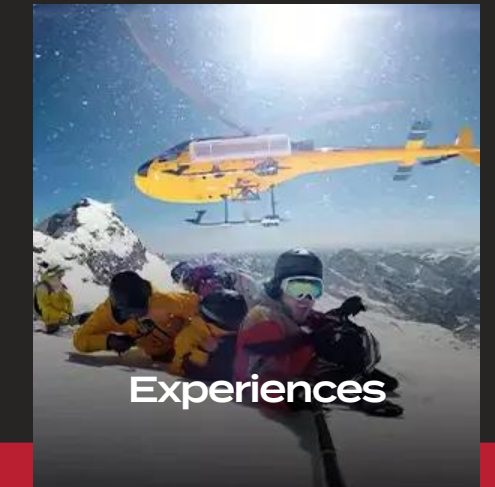
Luxury Spa Products





## ADDITIONAL SERVICES

To further elevate your stay, we offer additional services that include an on-site chef, pre-arranged chartered flights and yachts, access to exclusive establishments and events, and tailored experience packages.







































































## THE LOREN RESIDENCE

SMITHS PARISH, BERMUDA









**THE LOREN RESIDENCE**  
SMITHS PARISH, BERMUDA





**THE LOREN RESIDENCE**  
SMITHS PARISH, BERMUDA





LVH



## WHO WE ARE

LVH is the prominent luxury super home chartering company that provides access to thousands of elite homes in hundreds of global destinations. Our team will orchestrate the entire experience including exceptional on-site staff, in-home services, out of home activities and travel logistics. Endless possibilities await the most discerning guests. LVH Domus, our invite-only membership, brings the same level of service to every day of your life.





**CURATORS OF  
IMMEASURABLE  
MOMENTS**



GLOBAL HQ  
505 Fifth Avenue, 15th Floor  
New York, NY 10017, USA

LVHGLOBAL.COM  
1-212-244-4001  
BOOKING@LVHGLOBAL.COM